

## How To Measure Guide

The measurements we need, to give you an accurate price and layout are fairly simple. A few things to keep in mind are:

- Measure in inches only.
- Do not measure your cabinets, measure your walls as if the room were empty.
- Measure any appliances that you are keeping.
- Note ceiling height and soffit height (if applicable).

Using the guide below, give us a simple floor plan of your kitchen.

A - Measure the size of the wall.

B - If there are any windows or doors, measure from the left corner to the molding.

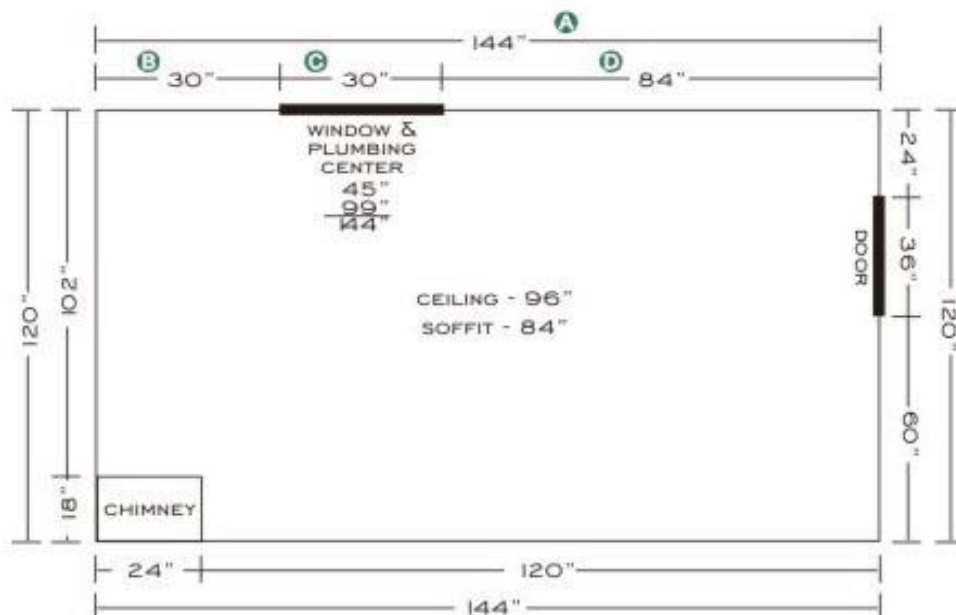
C - Measure the windows and doors themselves (include molding in measurements).

D - Measure from the window/door molding to the right corner.

Measurements "B" + "C" + "D" should equal "A".

- As an example, see the diagram to the right.
- Follow these steps in sequence around your room until you return to the starting point.

**Please keep in mind that this is only an ESTIMATE and accurate measurements will be taken by a professional measurer after an order has been placed.**





WHOLESALE KITCHEN  
CABINET DISTRIBUTORS, INC.  
Family owned and operated for 17 years

## You Give Us the Measurements, We'll Do the Rest!

Wall 1

A large grid for taking measurements, bounded by labels Wall 1, Wall 2, Wall 3, and Wall 4.

Wall 3

Please make note of all New/ Existing appliances and windows less than 36" from the floor.

Notes: \_\_\_\_\_  
\_\_\_\_\_  
\_\_\_\_\_